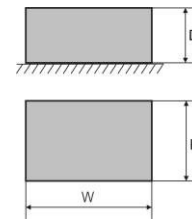
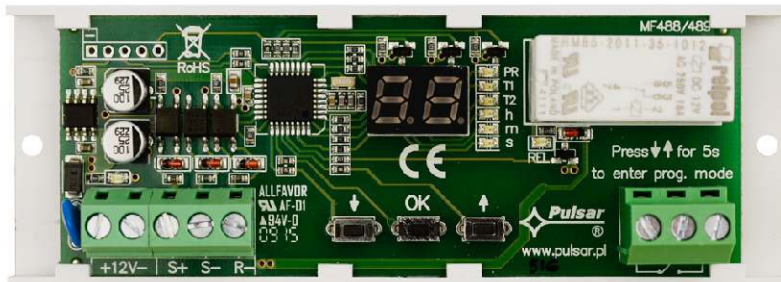


CODE: **AWZ 516 v.2.1/IV**
NAME: **PC1 Time relay module.**

EN**



DESCRIPTION

The PC1 time module is a transceiver allowing execution of time-logic programs. The device is characterized by versatility, high accuracy of the measured time based on the crystal oscillator and the possibility of its precise and repeatable adjustment. The relay can be used to extend short control impulses, e.g. controlling the operation locks, electromagnetic jumpers, bistable control, etc. The relay is used in automation and control circuits and access control projects, with logical dependencies on the state of: the controller, door opening sensor (reed switch), exit button, etc.

TECHNICAL DATA

Supply voltage	10 V÷ 16V DC
Current consumption	20 mA/65 mA (inactive/ active relay) (±5%)
S+ input	10÷16V DC control
S- input	0V (GND) control
R- input	0V (GND) control
The number of time-logic programs	18 (The possibility of implementing additional time-logic programs on demand)
Time ranges	0,1s ÷ 100h (stored in the EEPROM memory)
Number of relays	1
Maximum switching voltage	250V AC /30V DC
Maximum switching current	10A
The maximum contact resistance	<100 mOhm
Optical indication	- LEDs - 7-segment, double LED display
Operating conditions	II environmental class, -10°C ÷ 40°C, relative humidity 20%...90% no condensation
Dimensions	119 x 43 x 22 (WxHxD)
Mounting	mounting tape or mounting screws x2 (holes Ø3mm)
Terminals	Φ0,51mm÷2,05mm (AWG 24-12)
Net/Gross Weight	0,060 /0,11 [kg]
Declarations, warranty	CE, RoHS, 2 year from the production date